

METZLER

Free-minded
into the
future

» We should ask ourselves every day whether we're well prepared for the challenges that lie ahead.«

Friedrich and Albert von Metzler

There's only one solution for the future: be prepared. Have a long-term vision, a steady hand and a clear focus.

For twelve generations now, our guiding principle for entrepreneurial activity has been free-mindedness rooted in unwavering independence. Our principles and corporate values have remained unchanged while the services we offer to you are constantly optimized.

Let's cast a glance at the future together and see what we can do for you. We'll be delighted to speak to you personally and answer all your questions. We look forward to hearing from you.

The Members of the Executive Board
at B. Metzler seel. Sohn & Co. AG

What does the future hold in store?

It's certainly not a black box if we explore early on where the world is heading.

Artificial intelligence, cryptocurrencies, digital revolution, autonomous driving, climate change... all buzzwords currently on everyone's minds. But what do they really mean? Which ones are merely short-term hype and which ones stand for profound change? And how do they affect entrepreneurial decisions and preparations for the future?

As keeping pace with the developments is never enough, we launched "Metzler meets Science" several years ago in a quest to think ahead, find answers and anticipate trends. This platform promotes active exchange between leading specialists in research and industry.

For example, the "Metzler meets Fraunhofer" series of events provides our clients and business partners the opportunity to discuss scenarios for economic, social and industrial developments with experts in small groups. All these discussions can be vital for developing sound business strategies. Our other "Metzler meets Science" co-operations also give meaningful impetus to important issues for the future.

For more information:

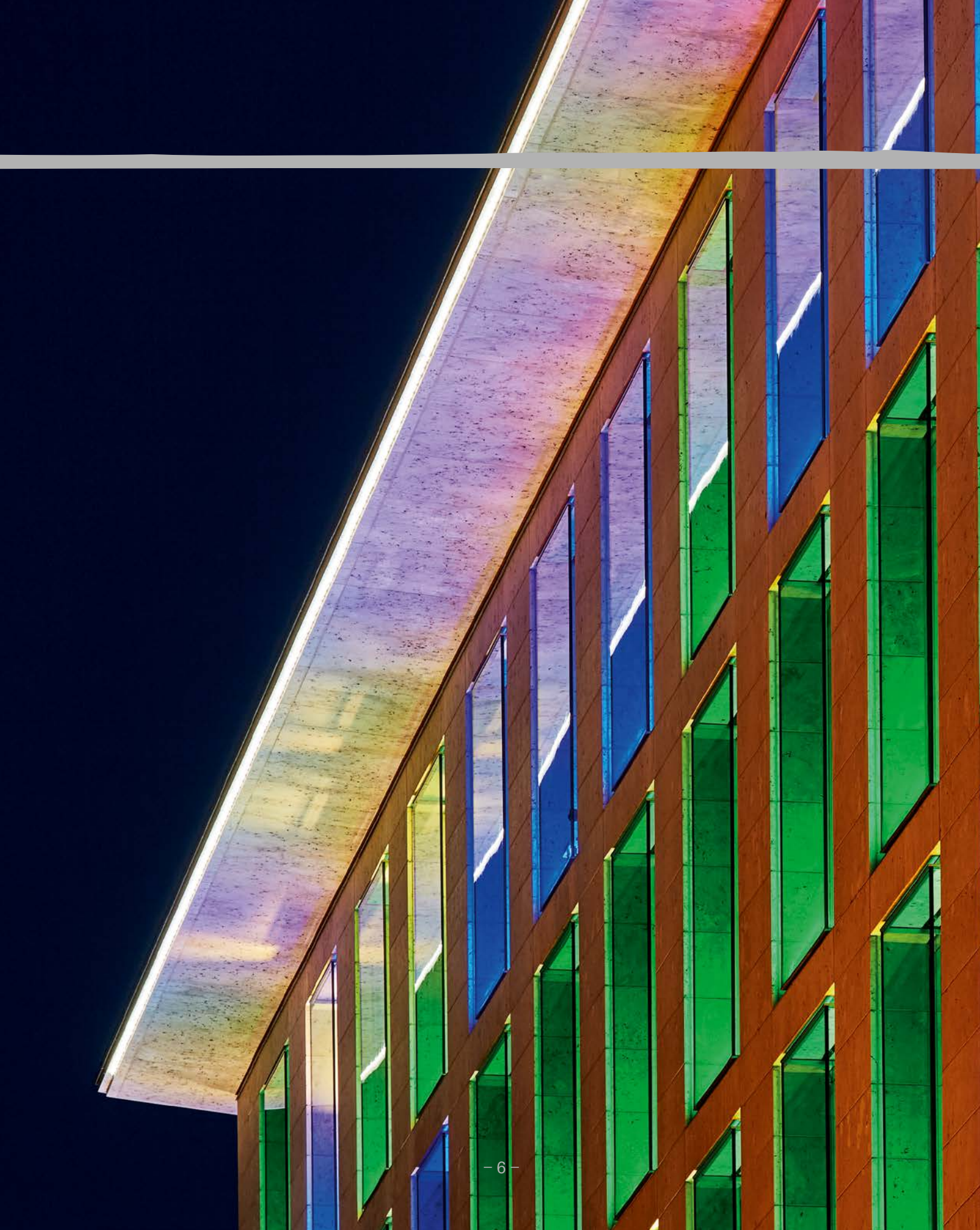
www.metzler.com/metzler-meets-science-en

Metzler

“Metzler meets Science” – Cooperations

Fraunhofer-Gesellschaft, one of Europe’s leading institutions for applied research; **TU Darmstadt**, one of Germany’s most important technical universities with access to the digital start-up scene; **Leipzig Graduate School of Management**, a quality business school for sustainable governance; **University of Duisburg-Essen** with research focused on change in contemporary societies; **Technical University of Munich**, one of Germany’s top three elite universities with outstanding achievements in teaching and research.

• meets Science





What makes
sense for the
future?

Stand firm but never stand still

Since 1674, our guiding principle for the future has been: preservation through change. This is more relevant today than ever before.

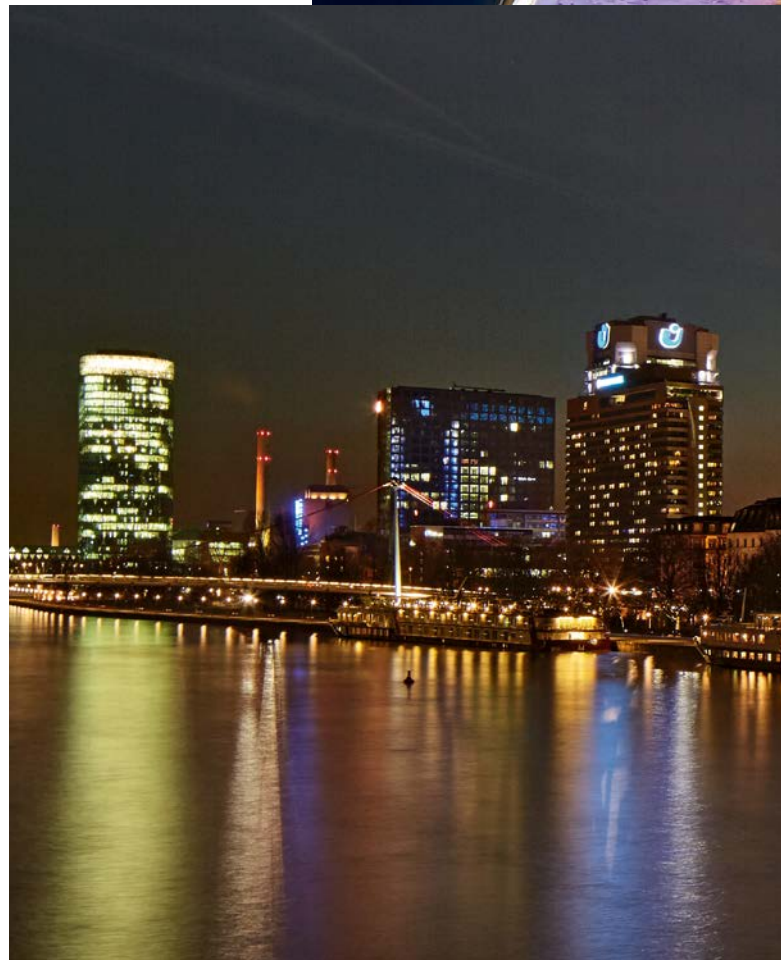
With our entrepreneurial spirit and a clear vision, we have taken a new direction several times in our 340+ years – because only those who adapt will prevail in the long run.

We adapt our business model continuously to changing client needs and markets. This means identifying new opportunities early on and exploiting them in the interest of our clients. For example, Metzler was already involved in advisory and financial transactions even before the term “investment banking” became known in Germany. Since the late 19th century, we have consistently refrained from engaging in mass retail business with savings deposits and loans. As a result, we can utilize our unwavering independence to work solely in the interest of our clients.

Close and long-term client relationships have always been at the core of our activities. In a fast-moving and complex world, this provides the best foundation for shaping the future together.

For more information:

www.metzler.com/entrepreneurial-spirit





Versatility inside and out: Metzler's head office at Untermainanlage 1 during the Luminaire festival in Frankfurt/Main.

Solutions for an aging society

How can company pension schemes be made compatible for the future? We develop tailor-made solutions and models.

Metzler Pension Management is a renowned provider of services surrounding company pension schemes and financing vehicles. We also offer advice in the context of asset-liability studies and can help structure strategic asset allocations. Metzler Pension Management GmbH provides companies with comprehensive expert support for funding existing pension liabilities – a service increasingly high in demand.

As an independent, long-term partner, we help develop, implement and manage capital-backed pension models for our clients. For 20 years now, Metzler Pension Management has been setting industry standards and creating compatible models for securing the future – thanks to our innovative strength.

For more information:
www.metzler.com/pension-management-en



Solutions by Metzler Pension Management (some examples)

2002 Inter-company contractual trust arrangement

First provider in the German financial sector

2014 Metzler Pensionsfonds AG Licensed as a non-insurance pension fund by the German Financial Supervisory Authority (BaFin); rapid growth of security assets

2020 Metzler Sozialpartner Pensionsfonds First provider of this pension fund solution facilitated by the Strengthening Occupational Pensions Act (BRSg)

To be continued

Focus on values and returns

Much more than just a trend: responsible and successful investments with ESG.

For many years now, we at Metzler Asset Management have been reviewing non-financial aspects in our company assessments to the same extent as financial criteria. Using a wide range of data, e.g. assessment of environmental and social criteria as well as aspects of good corporate governance (ESG), and taking a closer look at the companies puts us in a better position to detect and avoid risks. It also helps us identify companies that utilize their strong sense of global responsibility to create value in the long term – also in their investors' portfolios.

For all equity and corporate bond funds, we select individual securities using exclusion criteria based on 120 norms and conventions, e.g. concerning the prohibition of cluster munitions and anti-personnel mines, human rights, climate protection, the fight against corruption and money laundering, and child labor. Data is obtained primarily from MSCI ESG Research. In case of “very severe controversies” in one of the criteria, the company is excluded from our investment universe. If requested, we also consider other criteria in the investment process.



Our broad range of services is rounded off by direct talks with portfolio companies and exercising voting rights at their annual general meetings as well as extensive ESG reporting.

For more information:
www.metzler.com/esg-en

ESG – what's that?

ESG stands for “Environmental, Social and Governance”. ESG integration is a special strategy for more sustainable investing, with the aim of improving the risk/return profile in our client portfolios by incorporating key sustainability aspects into traditional investment analysis.

Keep an eye on value and values
Adopt an entrepreneurial approach and accept responsibility
Our individuality sets us apart
Let's position ourselves for the future by changing things together
A glance outside the box is well worthwhile
We bear the responsibility together
Develop new tailored solutions
We don't do everything
We discuss new ideas within our team
Go in new directions
I can push back boundaries
I have taken on challenging tasks from the onset
Metzler is different in several ways
Initiate and implement own projects
We help shape wherever
Always learning
Create something new that goes beyond the operating business
Be creative
Preserve
A firm

Independent in spirit

What moves us forward is our special corporate culture – and the people behind it.

The future starts in our minds – with new ideas that break with old patterns, combined with the will and the creative freedom to put them all into practice.

Our unwavering independence creates a solid basis for this. Metzler doesn't answer to any external shareholders or a parent company. This – along with a healthy dollop of free-mindedness – gives us the freedom to decide what new directions our bank should take. We are free to develop strategies and solutions tailored to our clients'

what has proven successful in the past

Our management can be approached directly with unconventional ideas

I'm free to try out new things

Our employees are an integral part of our company's success

There's no rule book

Metzler re-invents itself time and time again

The crucial difference: encouragement to try out new things

Our distinguishing feature: our free-mindedness

I appreciate the sense of humanity in our dealings with others

Discover something new every day

Entrepreneurial spirit is a good thing

We help shape developments in our field and beyond

Say no every once in a while

Have a firm opinion

I'm not just a number

the future possible

new things

Opinion

freedom

ing new

Take advantage of creative freedom

Metzler voices

needs and solely in their interests, thus helping them achieve optimal results.

One essential characteristic: at Metzler, the future is not shaped solely at management level but everywhere. Our open culture, rooted in entrepreneurial spirit and humanity, gives all employees an extremely high degree of creative freedom and personal responsibility. With around 800 staff members at ten locations worldwide, we achieve a lot.

A career at Metzler: making progress with a free mind

At Metzler, having a free mind is what counts. After all, personal and professional development can flourish best if we unfold our personalities, strengths and values. We support our employees through targeted training geared to their individual goals and abilities. We also offer interesting prospects for people seeking career changes.

For more information:
www.metzler.com/people

The bank is not the be-all and end-all

We have always played an active role in shaping our society – in Frankfurt/Main and beyond.

Generating new ideas, networking, turning values into action in order to achieve positive results today, tomorrow and the day after tomorrow; this has been our mission right from the very start. In our role as a bank and hand in hand with our staff and friends.

Charitable involvement is therefore a recurring theme throughout our company history, especially in the city of Frankfurt/Main. For example, we are a co-founder of the Senckenberg Natural History Research Society and have supported the Städel Museum in Frankfurt/Main right from the beginning. In 1998, we established the Metzler Foundation, thus bundling our charitable activities – some of which have been ongoing for centuries. This foundation enables us to enrich our engagement in Germany and Europe with new ideas.

We also encourage employees to make personal charitable commitments, and we support them with a matching fundraising model called “1 + 1 = 3”. This makes projects better known and helps attract more donors. Since 2010, we have supported charitable initiatives totaling more than EUR 400,000.

We will continue to think ahead, explore new possibilities and be highly committed!



The Christoph von Metzler Guest Professorship for International Finance: A long-term investment in research and teaching at Goethe University in Frankfurt/Main, established by Metzler Bank in 1992.



The Städel Museum in Frankfurt/Main: Supported by the Metzler family and by Metzler Bank since 1876.

highly



d.eu.tsch

Scholarship for
young Europeans

Future initiative "d.eu.tsch":
A scholarship program by the Metzler Foundation in co-
operation with Goethe Institute aimed at helping young
academics from southern Europe come to Germany to work.

Doing good:

The Albert and Barbara von Metzler Foundation

The future belongs to the next generation! The Metzler Foundation is thus committed to strengthening young people's potential in a wide range of fields. In order to make a sustainable impact, the foundation builds on long-term commitment and works in close cooperation with specialists and professionals. In addition, project mentors (usually Metzler employees) maintain close contact with sponsored institutions and lend support. This way, we can do more good together.

For more information in German:
www.metzler-stiftung.de



"Ornatocephalus metzleri":
A unique lizard species, approx. 47 m years
old, named after the Metzler family in
a gesture of gratitude by the Senckenberg
Nature Research Society.

committed

Free m

indeed

The future requires
an open frame of mind

Metzler. The free-minded bank

Since our early days as a cloth merchant in 1674, we have consistently had our own way of doing things. Metzler is independent in all respects and works exclusively in the interests of its clients. In order to reliably create and preserve value for them, we are constantly optimizing our services with an eye to the future. At the same time, Metzler's principles and corporate values do not change. They form the core of our business activities and the basis of our integrity. Our long-term success shows that this distinctive free-mindedness has been fruitful.

For more information:
www.metzler.com/our-core

Unwavering values

Independence

We are not dependent on outside shareholders, institutions or interests, neither in a business nor in a legal sense. This enables us to think and act independently, in complete dedication to the client. We set no bounds to preserving our clients' interests and are committed to utmost objectivity when providing advice.

Entrepreneurial spirit

Entrepreneurial spirit in the Metzler sense means preservation through change. A key success factor in our more than 340-year history has been and still is the entrepreneurial commitment of Metzler's employees. Metzler's maxim has always been "act rather than react" – and this has enabled Metzler to consequently adapt its strategy based on changing demands and to position itself successfully in new market segments.

Humanity

Metzler's entrepreneurial success is shaped by the people that work for us. They devote their knowledge, skills and ideas to getting the best-possible results. They pave the way for further change, thus securing our business success.

A unique business model

Metzler is Germany's oldest bank with an unbroken tradition of family ownership. Our business structure is carefully aligned to ensure that our actions are not influenced by our own interests or those of any third parties, but strictly by our clients' requirements. We concentrate on providing individual capital market services for institutions and discerning private individuals in four key areas where we have extensive expertise: Asset Management, Capital Markets, Corporate Finance and Private Banking. We focus on tailor-made financial services.

Four golden principles of success

- » We preserve our independence.
- » We assume responsibility towards our clients.
- » We concentrate on our strengths.
- » We create new solutions.

The benchmark for our own principles is the benefit for our clients. Thanks to our capital market expertise, years of experience, understanding of the global capital markets and innovative technology, we provide high-quality, internationally recognized services for our clients. We place special value on stability, reliability and long-term relationships.



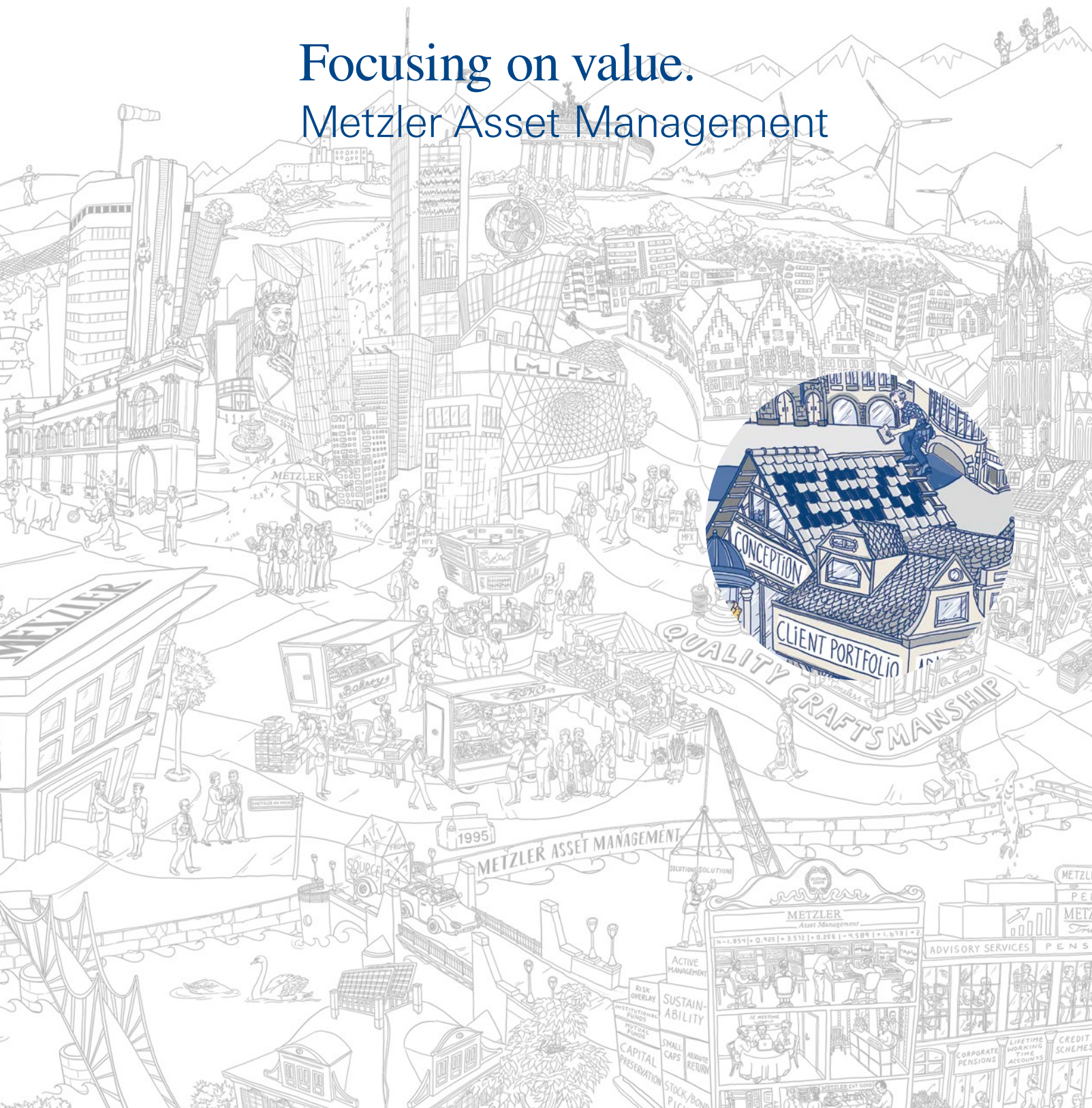
What can we do for you and your future?

Asset Management
Capital Markets
Corporate Finance
Private Banking



Focusing on value.

Metzler Asset Management





You are seeking long-term value stability for your capital investment?

We develop viable solutions by focusing on the essentials.

We offer sound investment services covering the entire asset management spectrum and tailored specially to you, our institutional client. We develop customized portfolio management concepts as well as efficient and secure administrative solutions. With many years of experience, a strong focus on your specific needs and standards, and a sound value system of our own.

We talk to you in detail to assess your investment objectives and individual risk-bearing capacity and to develop a shared vision of what is important. This way, mandates evolve into business relationships based on trust – with the aim of creating sustainable value for you.

For more on our point of view and your benefits:
www.metzler.com/asset-management-en







Spot on solutions.
Metzler Capital Markets

Spot-on solutions and sound recommendations are important to you?

We have the necessary substance – for capital market transactions at home and abroad.

Metzler Capital Markets supports institutional investors in all transactions on the domestic and global equity, fixed-income and foreign-exchange markets. We believe tailored spot-on solutions, rooted in expert knowledge and many years of experience, are the key to success.

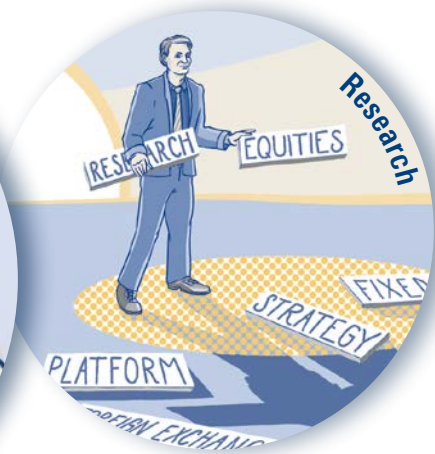
As an experienced specialist for the German capital market, we offer sound domestic and global expertise, independent in-house research, and strong performance from a single source. We are free-minded and independent – we think entrepreneurially, act discreetly, and adopt a fast and flexible approach in our cooperation with you.

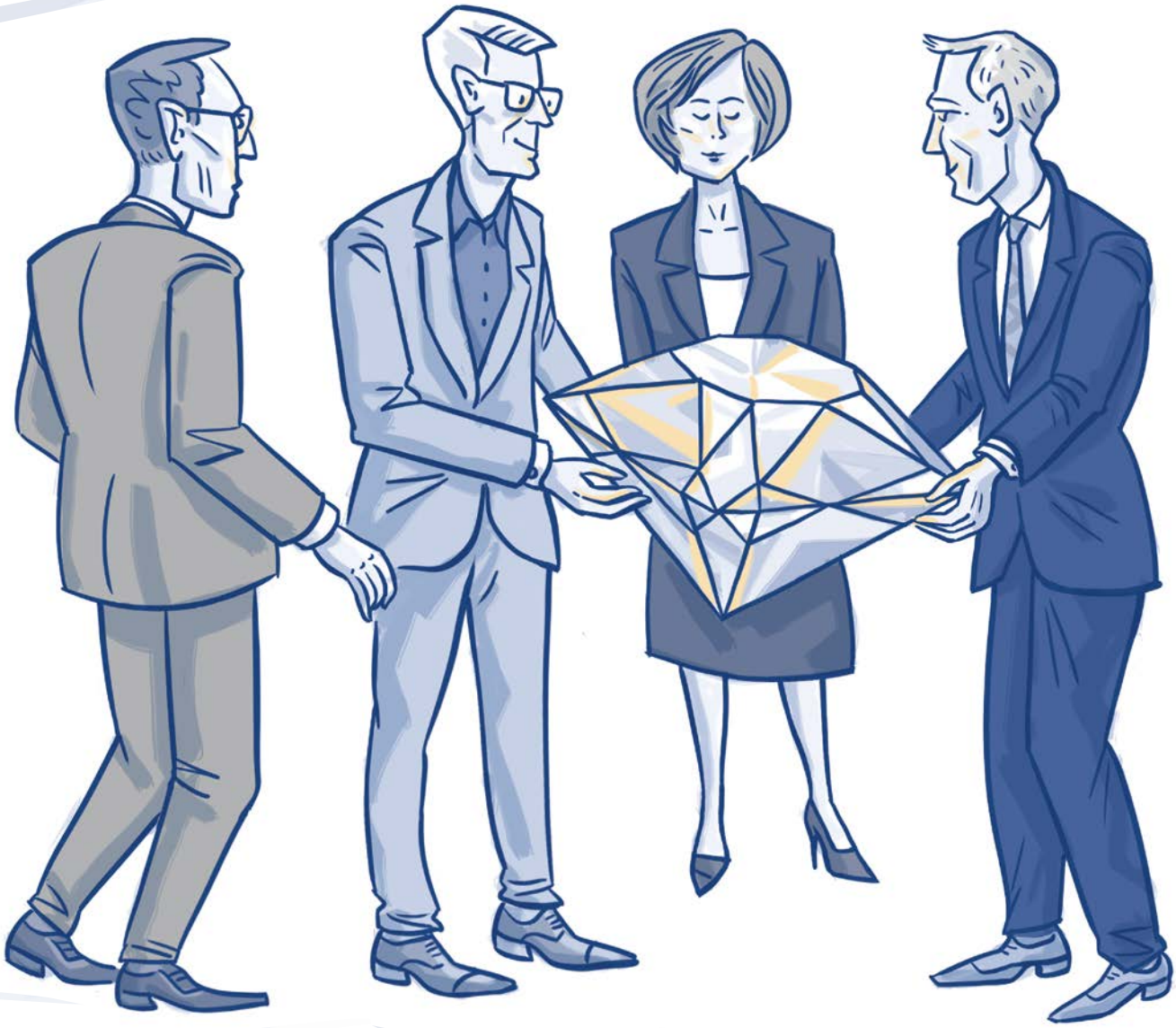
See for yourself how we can achieve added value for you in our fields of expertise: Currency Management, Equities, Fixed Income, Foreign Exchange and Research. Your personal long-term contact partner is always there for you.

For more about our spot-on solutions and your benefits: www.metzler.com/capital-markets-en

Fixed Income







Excellence matters.
Metzler Corporate Finance



You expect high-quality M&A advice with optimal results?

You can count on our uncompromising excellence in all facets.

As a German M&A specialist, we focus exclusively on advisory services – independent and discreet, and solely in your interest. Thus, you can benefit from our high-quality, value-maximizing solution developed and implemented specially for you.

We offer sell-side and buy-side advice for corporate transactions. We can accompany you in succession scenarios or any other reorganization of shareholder structures. We lend support with respect to public takeovers, acquisition or sale of shareholdings in listed companies, or in distressed and special situations. Our experienced team accompanies you personally throughout the entire transaction process, from an initial meeting to a successful closing.

What sets us apart – other than our expertise and experience? The perseverance and genuine enthusiasm required to turn good M&A advice into excellent M&A advice.

Challenge us to find your best solution.

For more on our excellence and your benefits:
www.metzler.com/corporate-finance-en





Reputation

An independent private bank since 1674, utmost discretion

Network

Exclusive Metzler contacts at the highest level

Expertise

A deep understanding of the processes and specific industry know-how

Individual advisory services

Committed and personal, at senior management level

Ideas

Free-minded and creative, solely in your interest

References

Diverse transaction experience in Germany and abroad

Culture

Proactive, entrepreneurial, responsible, guided by Metzler's values





The art of simplicity.
Metzler Private Banking

You want to preserve and grow your assets for generations to come?

Let us master the art of simplicity for you, our tried-and-tested principle for twelve generations.

Metzler Private Banking stands for a clear and simple approach: consistent, transparent strategies, active portfolio management with realistic goals, and client relationships based on trust with long-standing contact partners. We believe this is the only way to preserve and grow assets in the long term – as we have been doing successfully in our own company since its foundation in 1674.

Take advantage of our in-depth experience, appreciation of values and special expertise – for private individuals and foundations as well as in the field of asset guardianship (“Vermögensstreuhand”). With private banking offices in Frankfurt/Main, Hamburg, Cologne/Düsseldorf, Munich as well as in Stuttgart, we have a personal presence near you.

For more on the art of simplicity and your benefits:
www.metzler.com/private-banking-en



Simple and effective: Metzler's purity law

We don't offer complex, obscure products with unpredictable risks. In private banking, we focus solely on securities trading and asset allocation in the three liquid asset classes equities, fixed income and cash. Your benefit: a transparent, readily understandable portfolio that can be traded at any time.



*Our strong roots
ensure healthy
growth.*

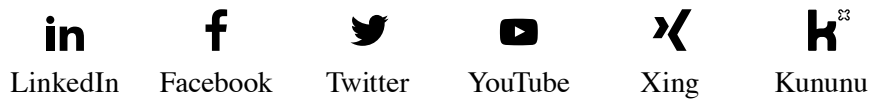
Free-minded into the future: Contact

Contact us if you want to shape your own future:

Metzler Bank
Untermainanlage 1
60329 Frankfurt/Main
Germany

Phone +49 69 2104-0
metzler@metzler.com
www.metzler.com

Follow us on:



Metzler locations

Frankfurt/Main
Cologne/Düsseldorf
Hamburg
Munich
Stuttgart
Atlanta
Los Angeles
Seattle
Beijing
Tokyo



Imprint

Text: Ursula Martin-Hantl

Editing: Gerald Pucher

Translation: Anne Wnoucek

Design: Ulf Rößling, Violetta Walter

Final artwork: Ilonka Ritter

Illustrations: Laura Baginski, Teresa Habild, Judith Ritter

Infographic Metzler history: Martin Gorka

Print: Druckerei MERKUR GmbH, Frankfurt/Main

Published by:

B. Metzler seel. Sohn & Co. AG

Untermainanlage 1

60329 Frankfurt/Main, Germany

Copyright:

This brochure may not be copied, reproduced or distributed, neither in full nor in part, without Metzler's prior written consent.



Photo credits

- Page 6–9 Metzler Bank headquarters, Untermainanlage 1, Frankfurt/Main, Germany
Photos: lumen-Joppich and Dörr, © Metzler Bank, Frankfurt/Main
- 14 House of Finance: Campus with the sculpture “Body of Knowledge” by Jaume Plensa
Photo: Uwe Dettmar, © House of Finance, Frankfurt/Main
- 14 Städel Museum on the Main river bank in Sachsenhausen
© City of Frankfurt/Main archives
- 15 Garden view of Städel Museum
Photo: Stefan Lemanski, © Metzler Bank, Frankfurt/Main
- 15 “Ornatocephalus metzleri”
© Archives of the Senckenberg Natural History Research Society, Frankfurt/Main
- 20 Metzler Bank headquarters, Untermainanlage 1, Frankfurt/Main, Germany
Photo: lumen-Joppich and Dörr, © Metzler Bank, Frankfurt/Main



METZLER